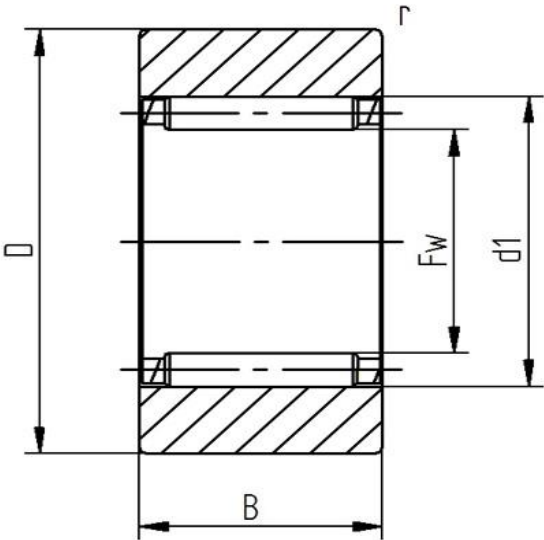


Data sheet - Support roller RSTO 15TN X (cylindrical)

Designation	RSTO 15 X
Type	cylindrical
D [mm]	35
d [mm]	
F, Fw * [mm max.]	20
B1 [mm]	
B [mm]	11,8
d1 [mm]	26
r [mm]	0,3
Dynamic load Crw [N]	9100
Static load C0rw [N]	10700
Speed limit [min-1]	6500



Every specification has been edited and verified carefully. STI Bearings GmbH assumes no liability for potential errors or incompleteness. Technical modifications are subject of changes.
© 2020 by STI Bearings GmbH
Reproduction, even excerpts, only with our approval.